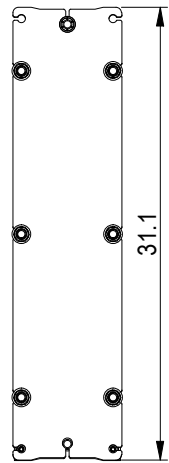
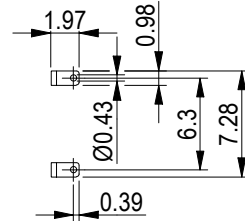
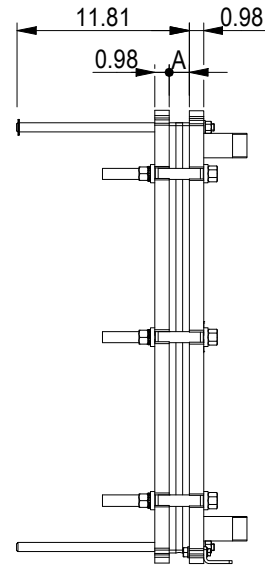


PRESSURE PLATE
(MOVABLE)

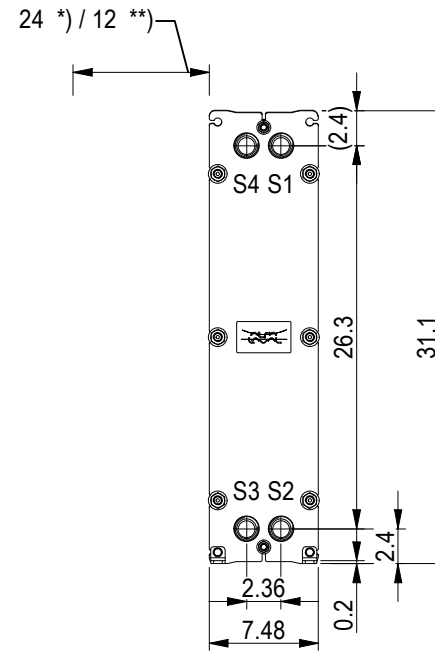


Space between pressure plate and supporting column should be kept free from fixed installations!



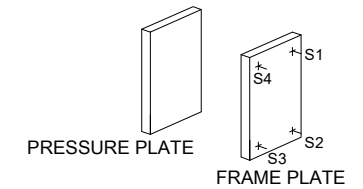
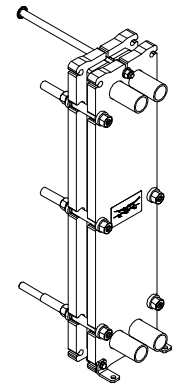
FRAME PLATE

All dimensions in inches

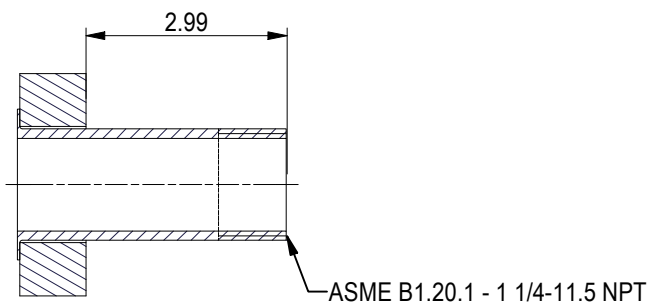
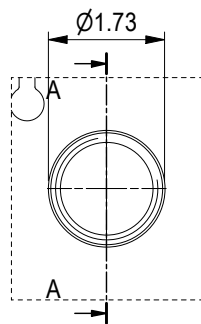


*) Recommended free space for opening and closing to be applied on both sides

**) Free space can be reduced to this distance on one of the sides



ASME B1.20.1 - 1 1/4-11.5 NPT, ALLOY 316, 101 mm
S1, S2, S3, S4 A-A:



| | |
|--------------------------|--------------|
| APPROX. OUTER DIMENSIONS | |
| LENGTH | 12.2 in |
| WIDTH | 7.9 in |
| HEIGHT | 31.5 in |
| APPROX. WEIGHTS | |
| NET WEIGHT, EMPTY | 161 lb |
| WEIGHT FULL OF WATER | 175 lb |
| PLATE MATERIAL | ALLOY 316 |
| PLATE THICKNESS | 0.5 mm |
| GASKET | NBRP Clip-on |

CHANNEL ARRANGEMENT 1*14 ML / 1*15 MH

NO. OF UNITS 1

null GPM
null GPM

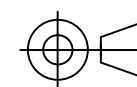


www.alfalaval.com

DRAWING
GASKETED PLATE HEAT EXCHANGER
TL3-PFG

ASME
Code Section VIII Div.1

MAWP 145 psi at 150.1 °F
MDMT 32.0 °F at 145 psi
Designed and constructed in accordance with the 2019 ASME Code.



8240171431
TL3-PFG, 30 plates

Do not use this drawing for foundation bolting or piping layout

DATE 6/1/22
REVISION 0